

Animal Explorers

This term we are going to find out about all kinds of animals. We will be looking at animals from different habitats, focusing on animals that come from eggs. We be looking at signs of new life with our exciting farm visit!

Dates to remember

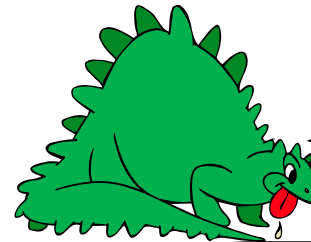
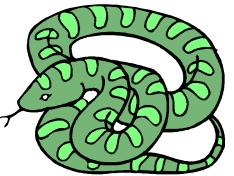
- 1st and 2nd March:** Parent Evenings
- 8th March:** Zebra Class Assembly 2:45
- 10th March:** Parents in to watch writing
- 22nd March:** Penguins Class Assembly 2:45
- 24th March:** Red Nose Day- Dress-up as a nose character.
- 24th March:** Mother's Day Lunch – Mother or another female family member are welcome to share a lunch with their child (12:00-1:00).
- 31st March:** The farm comes to visit
- 7th April:** Inset Day

We are looking at animals from many different habitats;
The jungle, under the sea, on the farm



We are looking for signs of new life around us during spring, on our forest walks and in our RE week.

We want to look at how animals and plants are similar or how they are different. We will also be making our own clay animals.



We want to find out which animals come from eggs and design our own animals from eggs and make them using split pins

We will find out why the egg is a symbol of new life by looking at the Easter story



Parents, you can help by...

- Asking your child which animal they would like to find out about. Help them research using both books and the internet. Remember to remind your child about our e-safety rules.
- Practising counting 1 more and 1 less than a number.
- Spotting signs of Spring outside on your way to school and at the weekends.